

Pumps



207

PUMPS

For versatile use, easy handling, compact:
BOLA pumps are made to meet almost all requirements
in practice and allow safe transfer of liquids.

PRODUCT TIPS



Page 209
Sampling Pump



Page 208
Battery-operated Pump


BESTSELLER
BOLA Cordless Pumps for Acids and Caustic Solutions

Material: **PP** Temperature resistance: **from +5°C to +60°C** Chemical resistance: **++ very good**

Product description:

Made of polypropylene, PTFE, Hastelloy®, driven by two commercial 1,5 V batteries (we recommend the use of rechargeable batteries)

FDA conform

| Length of suction pipe mm | Dia. of suction pipe mm | Cat. No.: |
|------------------------------|----------------------------|-----------------|
| 400 | 25 | G 870-01 |
| 600 | 25 | G 870-11 |

Product advantages:

- » powerful – pumping capacity of up to 6 litres per minute free flowing
- » compact construction
- » battery operated and therefore usable anywhere
- » easy handling
- » very light weight (only 500 g including batteries)
- » low-risk pumping
- » also suitable for narrow mouth vessels with ground joint 29/32 or thread GL 45, carboys or barrels

Applications:

For pumping low viscous liquids (e.g. acids, bases etc.)



For ground joint 29/32



For thread GL 45


BESTSELLER

BOLA Sampling Pump

Material: PTFE Material: PP Temperature resistance: from -10°C to +90°C Chemical resistance: ++ very good

Product description:

Made of polypropylene and PTFE. A pull on the ball handle produces a slight vacuum in the sampling bottle. Due to this vacuum, the sample is sucked into the sampling bottle. Both glass bottles and plastic bottles with a GL 45 thread can be used as sampling bottles. The pump provides universal chemical resistance since the sample is only exposed to PTFE.

FDA conform

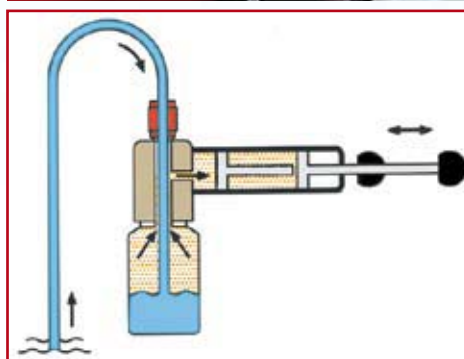
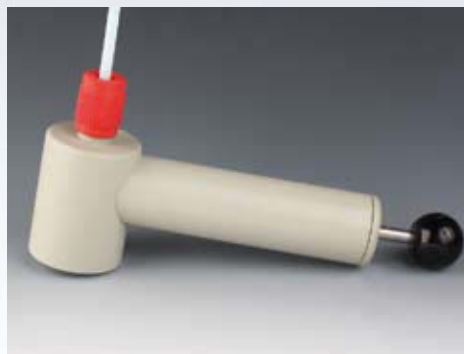
| Thread for connection GL | For bottles with a capacity of ml | Cat. No.: |
|-----------------------------|--------------------------------------|-----------|
| 18 | 100 - 2.000 | A 124-16 |

Product advantages:

- » compact construction
- » usable anywhere (no power or air supply needed)
- » easy handling
- » quick and low-risk pumping of ultrapure liquids
- » volume per stroke 50 ml
- » for tubing O.D. 6 mm

Applications:

For pumping liquids from sources that are not easily accessible; also suitable for liquids with a high viscosity, e.g. oils



SUITABLE: page 114
Tubing for all screw joints

BOLA Micro Magnet for Glass Pumps

Material: PTFE Temperature resistance: from +0°C to +150°C Chemical resistance: +++ universal Pressure: 1 bar

Product description:

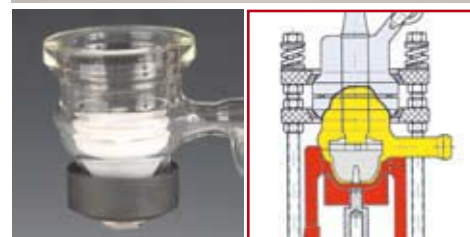
Made of PTFE, the magnet can be adjusted in height by means of the integrated screw. The strong magnet provides good power transmission.

FDA conform

| Suitable for DN | Bore dia. mm | O.D. mm | Height mm | Cat. No.: |
|-----------------|--------------|---------|-----------|-----------|
| 50 | 6 | 36 | 29 | G 876-14 |

Applications:

Suitable for all common laboratory glass pumps, e.g. from company NORMAG®



We build your pump!

Besides the pumps shown on these pages we also construct and produce custom-made pumps. Those pumps are used in a multitude of appliances and plants.



Membrane pump with PTFE bellow piston, compressed-air drive.



Metering unit with inspection glass, sensor mount and compressed-air driven PTFE bellow piston.